

Primo Absorption Minibar - Solid Door

P-30, P-40

**MB UK
SPECIFICATION SHEET**



Features

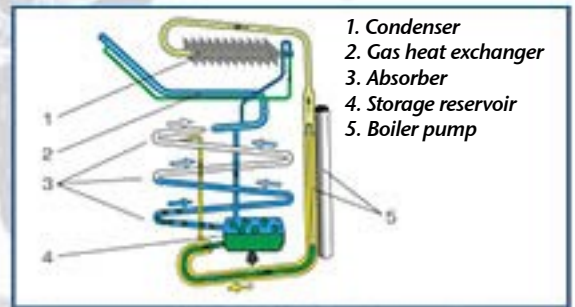
- Silent absorption cooling technology
- ADA compliant door
- Easily adjustable mechanical thermostat
- Removable cold cube wire racks for easy cleaning
- Door racks for maximum product merchandising
- Thermal insulation manufactured using 100% environmental friendly cyclopentane
- Stainless steel die-cast snap lock
- Strong all-around magnetic door seals to keep the door tightly closed
- Reversible door hinge
- Internal intelligent LED lighting
- Fully automatic defrost



Adjustable Mechanical Thermostat



21L Door Rail



Absorption Cooling Technology

1. Condenser
2. Gas heat exchanger
3. Absorber
4. Storage reservoir
5. Boiler pump

Technical Specifications

| | Primo 30 Absorption | Primo 40 Absorption |
|---|--|---|
| Model Numbers | P-30 | P-40 |
| ERP Rating | F | F |
| Capacity (liters / cubic feet) | 21L / 0.74ft ³ | 26L / 0.91ft ³ |
| Dimensions HxWxD (inches) HxWxD (mm) | 20.16 x 15.12 x 16.65 512 x 384 x 423 | 20.16 x 16.5 x 16.65 512 x 419 x 423 |
| Watts (W) | 60-75W | 60-75W |
| Voltage (V) | 110V / 50-60Hz 220V / 50-60Hz | 110V / 50-60Hz 220V / 50-60Hz |
| Energy Consumption (kWh/24h)* | 0.66 kWh/24h* | 0.75 kWh/24h* |
| Net Weight (kgs / lbs) | 12.25kgs / 27lbs | 11.1kgs / 24.47lbs |
| Noise Level (dB) | 23 dB | 23 dB |
| Certification | UL/G-Mark/CB/EAC/GS-Mark/NOM | |

*Average energy consumption per 24 hours, at 25°C (77°F) ambient temperature and 7°C (44.6°F) cooling temperature, in compliance with EN ISO 7371
Specifications may change without notice due to continuous product development.

